



Premier
Imaging

Medical Systems, Inc.

ISO 9001 Certified



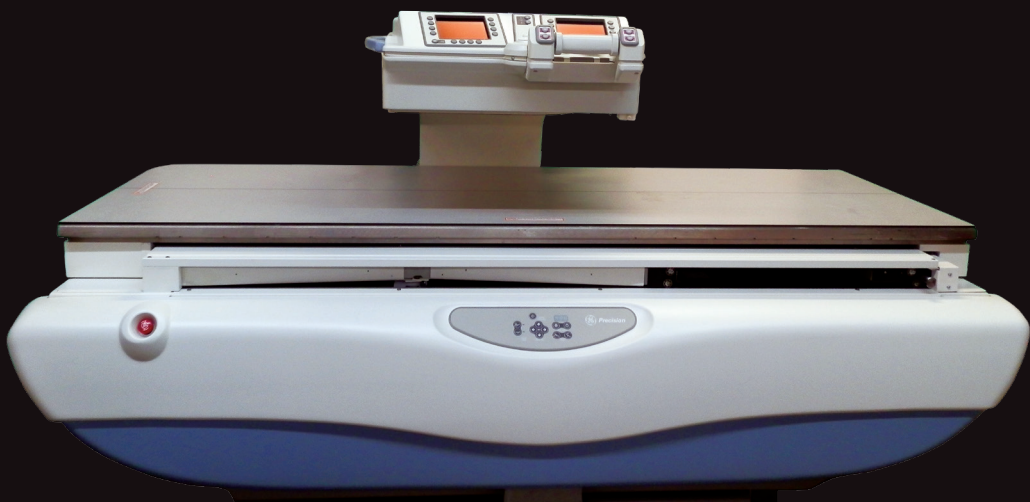
INSIGHT ENHANCED
FOR THE PRECISION 500 AND LEGACY

The Only Digital
Imaging Technology Update

Dynamic Flat Panel for the GE Precision 500 and Legacy Systems

INSIGHT ENHANCED

- ★ Windows 10 Platform
- ★ Eliminates the OEM Saturn Windows 95 Computer
- ★ 50% or More Dose Reduction
- ★ HIPPA Compliant
- ★ Upgrade Provided to your Proven R and F Room
- ★ Table Side Operators' Controls
- ★ Complete Rooms Available



Insight Enhanced Update for the GE Precision 500 and Legacy R & F Rooms

WINDOWS 10 PLATFORM HIPPA COMPLIANT | FDA CLEARED SYSTEM



INTUITIVE USER INTERFACE | EASY-TO-USE CONTROLS

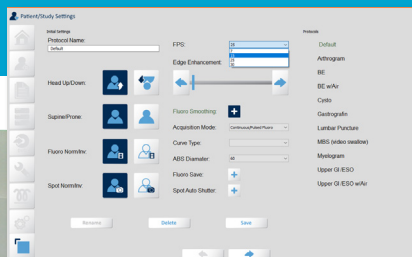
Image acquisition:

- ★ Fluoroscopy and Pulsed Fluoroscopy Acquisition at 30, 25, 15 and 7.5 Frames Per Second (FPS)
- ★ Fluoroscopy stores up to 30 minutes of fluoroscopy per exam (For MBS and speech therapy patients)
- ★ Support for single or dual monitor operation for “live” and “reference” touchscreen monitors
- ★ Immediate image review with post processing features such as annotations, and region of interest
- ★ Standard image processing features include; invert, zoom/pan, window/level, edge enhancement and variable playback speed controls for multi-frame sequences to optimize patient review
- ★ Patient studies can be printed to any Windows printer or archived to PACS

- ★ DICOM Send /Worklist
- ★ MBS function can record the fluoroscopy of an entire exam
- ★ Increase the imaging performance of your existing fluoroscopy system
- ★ Increased Security with Windows 10
- ★ Improved compliance, fluoroscopy time and dose monitoring built in
- ★ Increased equipment reliability while keeping operating costs low
- ★ 12 months parts and labor warranty
- ★ 3 day installation

Options:

- ★ Media Write to external drive which may require a new facility HIPPA compliance letter for patients
- ★ Reference Monitor Support



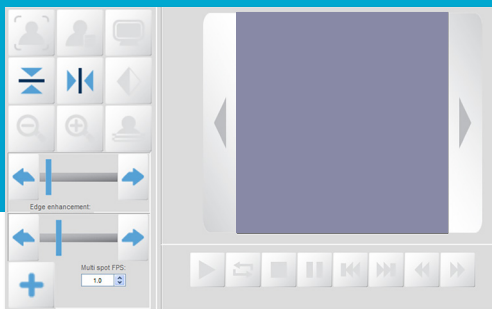
Proven imaging system with over a decade of installs

UTILIZING PREMIER IMAGING'S INTERFACE IS THE PERFECT TECHNOLOGY REFRESH FOR THE INDUSTRY STANDARD GE PRECISION 500 AND LEGACY SYSTEMS



INCREASED IMAGE QUALITY | MINIMUM OF 50% DOSE REDUCTION

- ★ Windows 10 Support
- ★ Replaces the Saturn/Digital acquisition (Windows 95) computer on the Precision 500
- ★ Spot Exposure Frame Rates
0.5, 1, 2, 3, 4, 5, 6
- ★ Retrospective save allows for the saving of short fluoroscopy loops during any study
- ★ Our unique Prospective save is designed for MBS studies and can save up to 30 minutes of fluoroscopy and can eliminate the video recorder
- ★ Unique Feature Fluoroscopy Loop Editing
- ★ Flexible and customizable image process settings to match your system and needs
- ★ Unique Table Side Operator controls enhances workflow
- ★ Our CSI Dynamic Detector has a quantum detection efficiency of 56% compared to end of life CCDs in the Precision 500D at 35%
- ★ Low/Medium/High Dose Support
- ★ Elimination of GE DRS cabinet for the Advantx and Legacy
- ★ Optional Dosimetry Kit displays and records exposure dose and fluoroscopy dose rate
- ★ Display & Recording of Air Kerma, Air Kerma Rate, and Fluoroscopy Time
- ★ Auto print to DICOM PACS of dose report per exam



Premier Imaging Medical Systems, Inc.

AN ISO 9001 FACILITY

PO Box 188 | Rome, GA 30162 | Office 706-232-4900 | www.premierims.com

Sales: Brian @ 706-996-6070 or brian.carlock@premierims.com

Sales: Robin @ 706-512-0265 or robin.west@premierims.com



- ★ Minimal Downtime for Update
- ★ Huge Improvement in Image Quality
- ★ Fluoroscopy Spot Acquire is 0.5, 1, 2, 3, 4, 5, 6 fps
- ★ MBS Function Capable of Recording the Fluoroscopy of the Entire Exam



Auto Dose Reporting to PACS

Exam protocol	
Patient name	EMERGENCY PATIENT
Patient ID	
Date of birth	12/31/68
Sex	
Study description	
Institution name	Institution name
Study date	10/14/19 18:45
Total dose	14.70 [mGy]
Exposure time	0.55 [min]